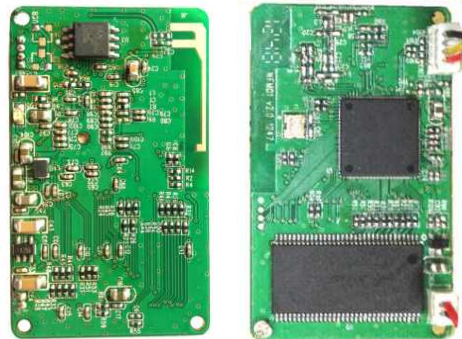


**Description**

This WiFi module has been designed to connect USB video class device and allow people to view video on smart phone. The module accepts most UVC compatible USB camera or video devices.

**Features**

- ✓ Small in size 30x50mm, with on board antenna
- ✓ Plug and play, Support USB device hot plug
- ✓ No internet or local network required
- ✓ Each module has its own SSID
- ✓ Multiple users can view the live video stream
- ✓ Working distance >10M in open area
- ✓ Accept most USB2.0 UVC devices
- ✓ Status LED
- ✓ Support VGA format 30fps (depends on camera)
- ✓ Video Latency: <0.5sec
- ✓ DC5V or Li-ion battery(3.7V) operation


**Connectors and description**

J1 USB connector : connect to external USB device

J2 Power connector : DC5V or Li-ion battery

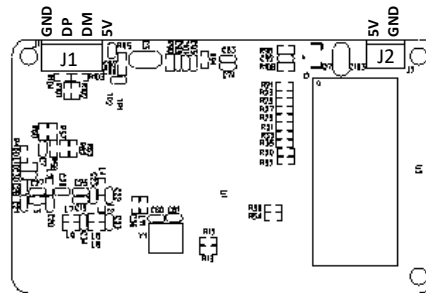
Connector pitch 1.5mm single row

**Examples of USB video devices:**

PC cameras, microscope cameras

Telescope cameras, document cameras,

Surveillance cameras and snake tube cameras.


**Electrical characteristics**

Parameter	Condition	Min	Typ	Max	unit
Operation voltage		3.5	3.7	5	V
Operation current	With USB disconnect		130		mA
	With USB connected and user log in		350	410	mA
	With USB connected but no log in		260	270	mA
Operation temp		0		45	deg

Note : operation current will depend on the USB camera

**Operation**
**Module side:**

1. Connect USB video device to the module
2. Power on the module by applying DC5V or battery. LED will be blinking to indicate the initialization. When it is ready, LED stop blinking.

**View video:**
**PC:**

1. First connect the correct SSID, usually in WFM-XXXXXX format, you can find the right SSID on the onboard label.
2. Open a browser, such as Chrome/Edge, enter the URL (<http://192.168.X.1>) in the address bar, you can find the right IP on the onboard label.
3. Now you can see the live video.

**Smart Phone:**

**Using browser:** Same operation as pc. Note that different browsers, or different system versions of the same browser, the performance will be very different, some latency will be very large. This method is not recommended.

**Using App.**

There are many different apps(need support http MJPEG streaming) to view the video, users need to find one and install it themselves, here is an example of IPCams for iOS phone.

Download the app from <https://apps.apple.com/us/app/id1045600272> then connect the correct SSID.

<p><b>Step1</b> Tap <b>Add Camera</b></p>	<p><b>Step2</b> Tap <b>Brand</b></p>	<p><b>Step3</b> Move to the bottom and tap <b>Add Custom Camera</b></p>

<p><b>Step4</b> Input the correct information Then tab <b>Advanced Settings</b></p>	<p><b>Step5</b> select <b>MJPEG</b> type</p>	<p><b>Step6</b> Tab <b>Save</b> and then tab the saved camera name, now you can see the live video</p>